

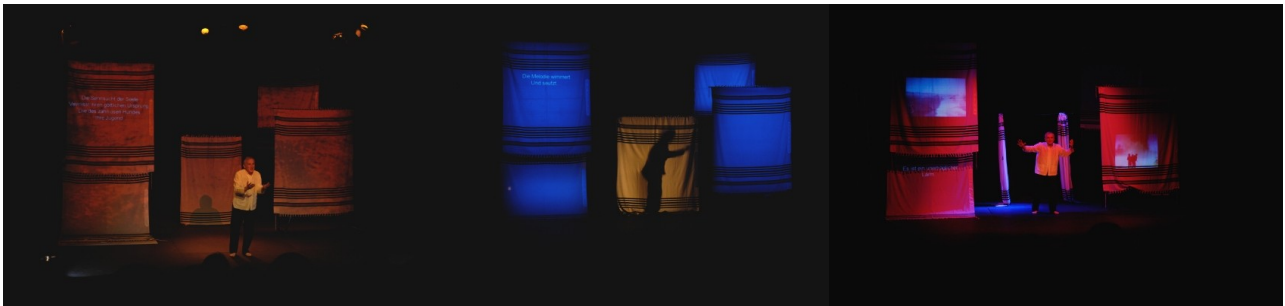
TECHNICAL SHEET

METAMORPHOSE D'UNE MELODIE

IL Peretz

**Company Théâtre en L'Air
67000 Strasbourg – France**

4 people on tour



Actor

Rafaël Goldwasser
0033 3 88 84 59 99
goldwaserrafael@gmail.com

General Rule and Lightning

Jean Muckensturm
0033 6 74 28 50 48
jmuk@free.fr

Video Control

Patrick Floch
0033 6 66 58 86 76
pfloch@estvideo.fr

Directed Video

Mariette Feltin
mariette.feltin@gmail.com

Administration

Elisabeth Vielle
0033 3 88 37 33 25
elisabeth.vielle@gmail.com

N° SIRET **38288965700047** - N° licence d'entrepreneur de spectacle **2-134553**

PLANNING

J – 2 ou J – 3 (depending on distance)	Transport and Travel 1 actor, 1 technical manager, 1 technician video, 1 video director, video equipment, decor and accessories	
J - 1	9h >13h	Unloading and installation Decor and Accessories Light and Video Editing <i>Allow 1 technician for light assembly and decor</i>
	13h > 14h30	Break
	14h30 > 19h	Continuation and End Montage Rehearsals Adjustments and Spinning Light Trimming Video <i>Allow 1 technician for light assembly and decor</i>
	19h > 20h30	Break
	20h30 > 22h	Rehearsal
J - 0	By Day	Presence on stage actor Rehearsals and trimmings Last technical refinements
	2 hours before the show	Meeting All on Stage
	20h30 > 22h	Performance
	22h30 > 0h	Dismantling and loading <i>Allow 1 technician for light disassembly light and decor</i>
J + 1	Morning	Departure All
<p>Provide Lodge for 1 actor Table, chair, mirror, towels Iron and ironing board Hot drinks, coffee, tea Soft drinks, water, sodas, fruit juices Sweet and salty biscuits, fruit.</p>		

Equipment to provide the company

Lightning

1 light dimmer	24 channels from 2Kw
1 light table	type Avab Presto, Pronto existing disk
20 Projectors PC 1kw	clear lens, filter holder, hook, gelatin
1 Projector PC 650kw	clear lens, filter holder, hook, gelatin
7 Profiles 1kw (15/38°)	filter holder, hook, gelatin
8 PARS 64 (CP 61, moyen)	filter holder, hook, gelatin
2 Horiziodes 1kw	filter holder, hook, gelatin
6 Turntables on floor	Height to see with according stage

câble DMX

Vidéo

1 Control Monitor **minimum 19" with connectique**

Stage

Operture 8 m / Deepthness 6 m - Bottom stage and floor black

Black curtains to see – depending from the teater

2 ladders for installation design and light h500

1 ladder h300 for actor during the show (black)

Black electric tape and black tape gaffor

Material provided by the company

Vidéo

1 Hard Disk LaCIE FDC VIDEO6 2T

- +1 alimentation
- +1 220v sector
- +1 USB
- +1 FireWire 400/ieee 1394
- +1 security Hard Disk

1 Hard Disk LaCIE LUFT VIDEO2 0,5T

- +1 alimentation
- +1 220v sector
- +1 USB
- +1 FireWire 400/ieee 1394

1 Audio Card midi SAFFIREPRO24 ou Carte EMI 2/6

- +1 alimentation
- +FireWire 400(SAFFIREPRO24) or USB (Carte EMI 2/6)
- +cable audio stéréo Cinch (Card EMI 2/6)

1 Videoprojector SANYO_PLC_XT35L

- +cable alimentation
- +télécommand
- +exchange and security lamp
- +fixation on support

2 electrical extends XVGA from 20 m each

1 Computer DELL-- FLOCH

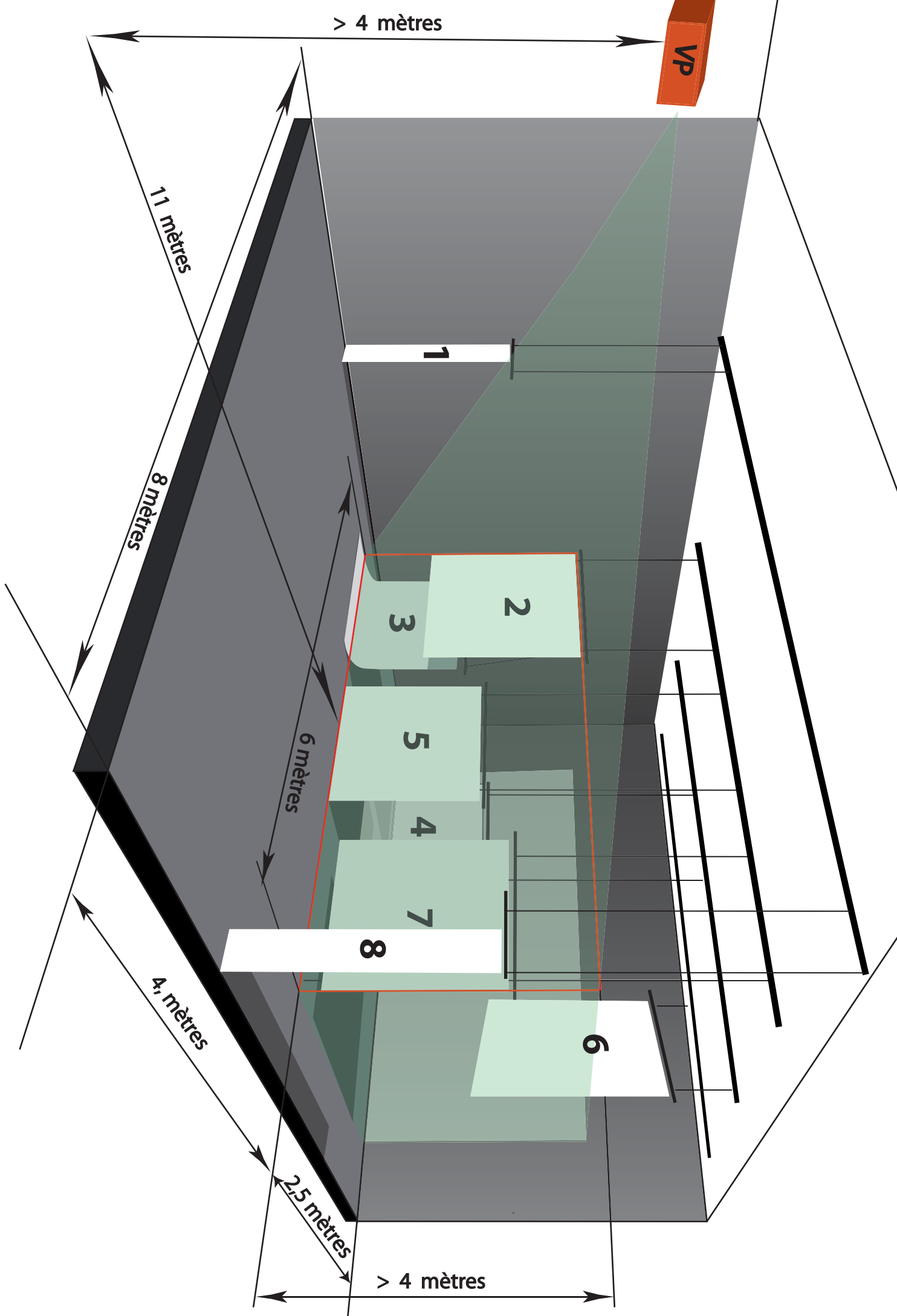
- +1 alimentation
- +1 220v sector
- +1 mouse
- +1 Key USB
- +1 lamp (alim USB) fot lightning computer to work

1 Computer-- MARIETTE

- +1 alimentation
- +1 220v sector
- +mouse

Stage

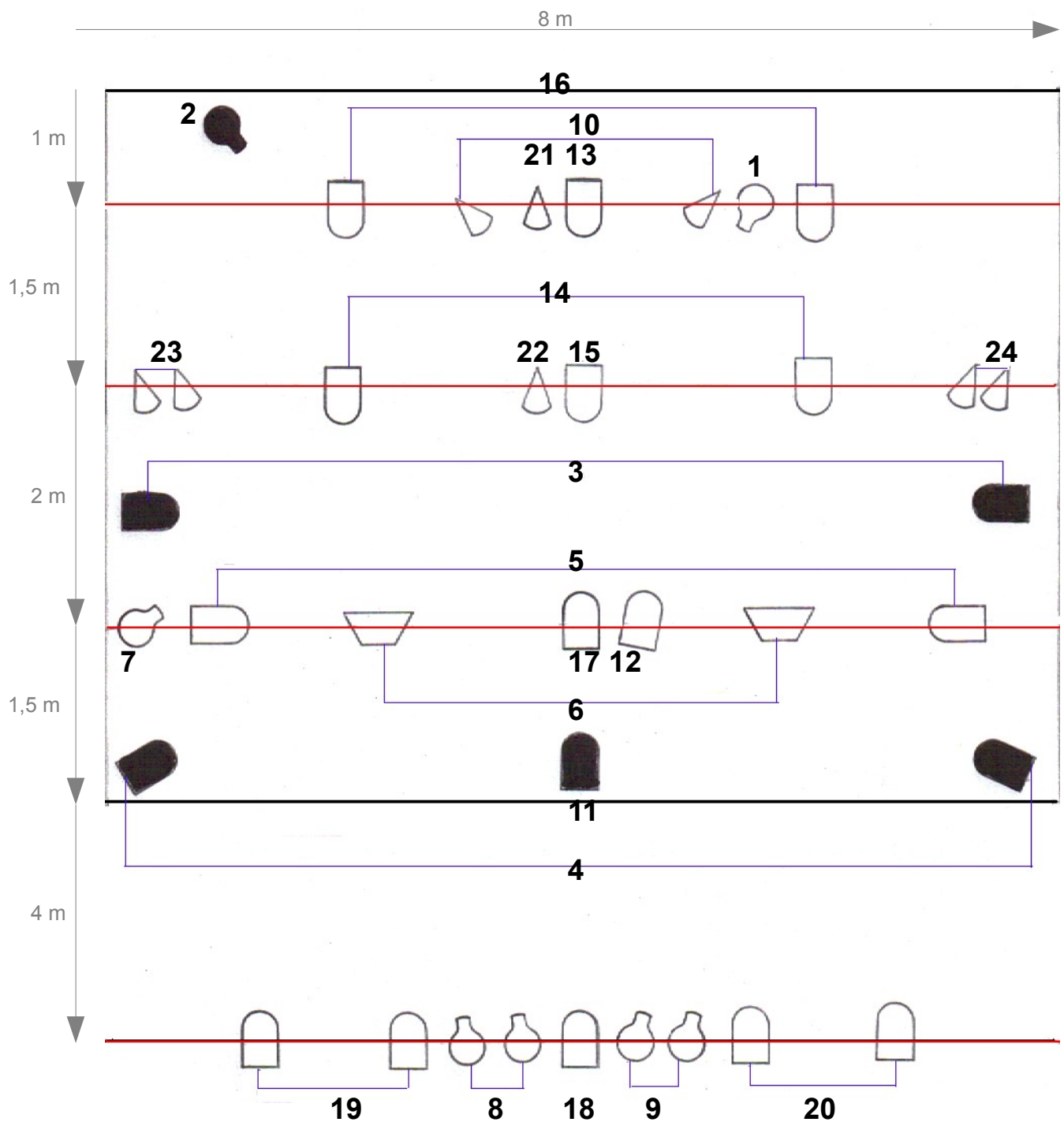
8 Projection Screens in Stuf - Taliths 1-2-3-4-5-6-7-8 with equipments (see pictures)



METAMORPHOSE D'UNE MELODIE

Compagnie Théâtre en l'air

Implantation Lumière



N°	Type		Gelat
1	1 DECOUPE 1KW (15/38°)	Couloir net	201
2	1 DECOUPE 1KW (15/38°) SOL	Ombre	205
3	2 PC 1KW SOL	Rasant sortie Rafaël sous Ta lit centre	107 + diff
4	2 PC 1KW SOL	Rasant grande ouverture	201 + diff
5	2 PC 1KW	Latéraux tout plateau devant les Ta lit	201 + diff
6	2 HORIZIODES 1KW	Opéra	106
7	1 DECOUPE 1KW (15/38°)	Net entre Ta lit jardin et cour (aveugle)	202
8	2 DECOUPES 1KW (15/38°)	Net sur Ta lit jardin haut et bas	132
9	2 DECOUPES 1KW (15/38°)	Net sur Ta lit cour haut et bas	132
10	2 PAR 64 (CP62)	Latéraux sur Rafaël Ta lit centre lointain opéra	119
11	1 PC 650W SOL	Rafaël face Ta lit lointain centre	204 + diff
12	1 PC 1KW	Rafaël tête en haut Ta lit cour	152 + diff
13	1 PC 1KW	Contre jour	134 + diff
14	2 PC 1KW	Contre jour	134 + diff
15	1 PC 1KW	Contre jour	134 + diff
16	2 PC 1KW	Contre jour	134 + diff
17	1 PC 1KW	Face entre Ta lit jardin et cour	152 + diff
18	1 PC 1KW	Face centre devant Ta lit	152 + diff
19	2 PC 1KW	Face jardin devant Ta lit	152 + diff
20	2 PC 1KW	Face cour devant Ta lit	152 + diff
21	1 PAR 64 (CP61)	Tache devant Ta lit centre lointain	117
22	1 PAR 64 (CP61)	Tache devant Ta lit centre	117
23	2 PAR 64 (CP61)	Taches jardin	117
24	2 PAR 64 (CP61)	Taches cour	117

METAMORPHOSE D'UNE MELODIE

Compagnie Théâtre en l'air